

NATIONAL FRA
APPROCHE AUX INSTRUMENTS

13 TOURS VAL DE LOIRE LFOT
SRE RWY 20

ALT AD : 357 THR : 351

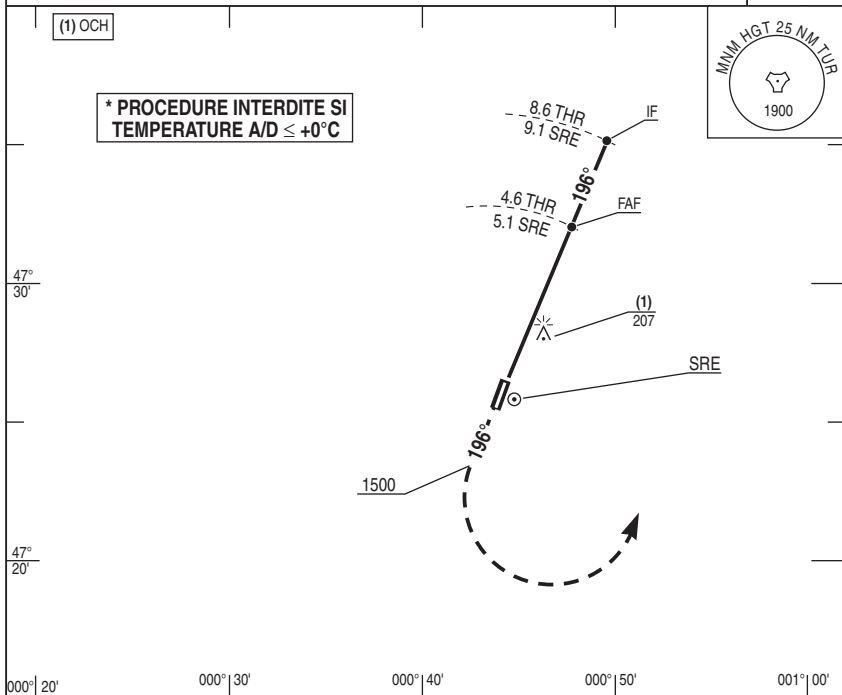
15 DEC 2011

VAR
1°W (10)

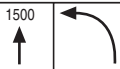
APP : 142.45 284.025 233.275 (Montée)
TWR : 118.3 339.0



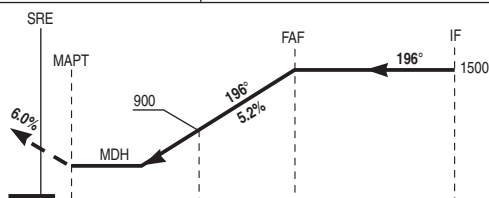
* PROCEDURE INTERDITE SI
TEMPERATURE A/D ≤ +0°C



REF HGT : ALT THR en ft



API : Monter dans l'axe. A 1500 tourner à gauche et suivre instructions du CTL.



THR ← (NM)		1.2	2.7	4.6	8.6
SRE ← (NM)		1.7	3.2	5.1	9.1

CAT	SRE OCH : 457		SRE NM	HAUT	4	3	2
	MDH	RVR					
A	840	1500					
B		1500					
C		2400					
D		2400					

Observations :

DIRCAM

SRE RWY 20

CHG : MDH, RVR.

13 TOURS VAL DE LOIRE LFOT