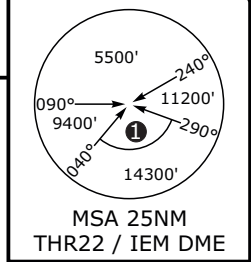
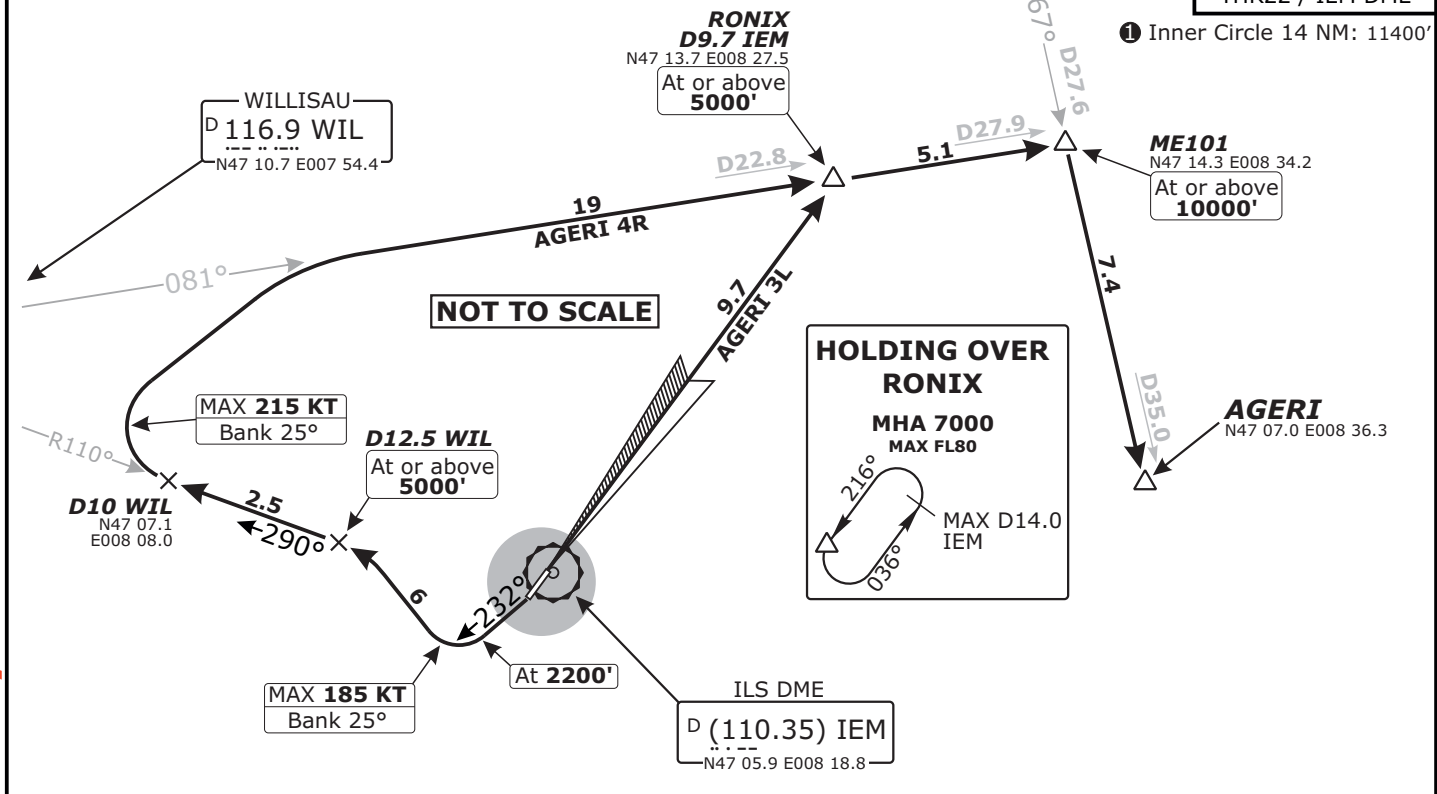


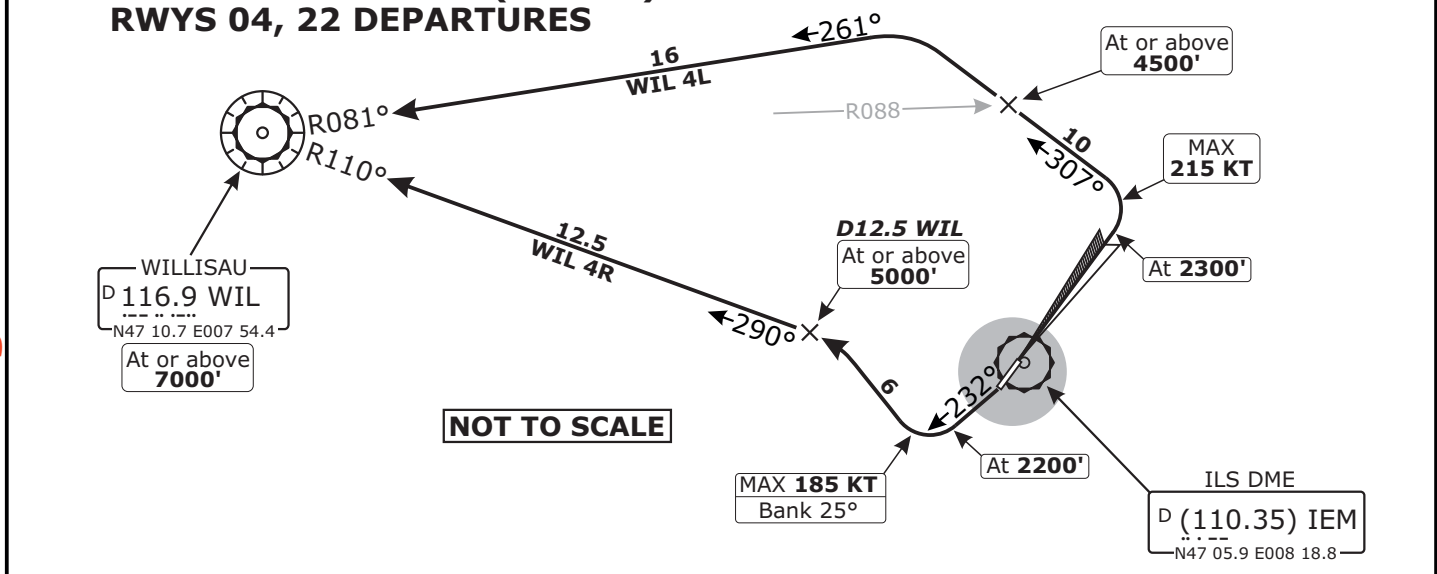
SWISS Radar LSAS_CTR 128.05	EMMEN Arrival LSME_APP 119.50	EMMEN Tower LSME_TWR 120.42	Apt Elev <b>1400'</b>	Trans level: by ATC Trans alt: 7000'
-----------------------------------	-------------------------------------	-----------------------------------	--------------------------	---



**AGERI THREE LIMA (AGERI 3L)  
AGERI FOUR ROMEO (AGERI 4R)  
RWYS 04, 22 DEPARTURES**



**WILLISAU FOUR LIMA (WIL 4L)  
WILLISAU FOUR ROMEO (WIL 4R)  
RWYS 04, 22 DEPARTURES**



**Initial climb clearance FL80**

SID	RWY	ROUTING
AGERI 3L	04	Climb straight ahead, intercept IEM LOC outbound, enter RONIX holding pattern, after reception of onward clearance, proceed from RONIX via ME101 to AGERI.
WIL 4L		Climb straight ahead, intercept IEM LOC outbound, at 2300' turn LEFT, 307° track, intercept WIL R-081 inbound to WIL.
AGERI 4R	22	Turn RIGHT 232° track, at 2200', intercept WIL R-110 inbound to D10 WIL, turn RIGHT, intercept WIL R-081 to RONIX, enter RONIX holding pattern, after reception of onward clearance, proceed from RONIX via ME101 to AGERI.
WIL 4R		Turn RIGHT 232° track, at 2200', intercept WIL R-110 inbound to WIL.

Valid for flight simulation use only - do not use for real life navigation