

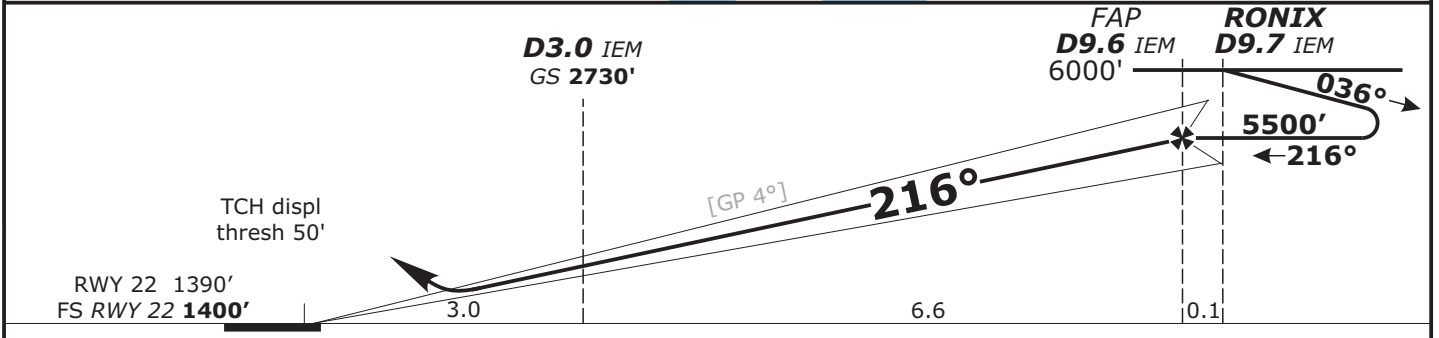
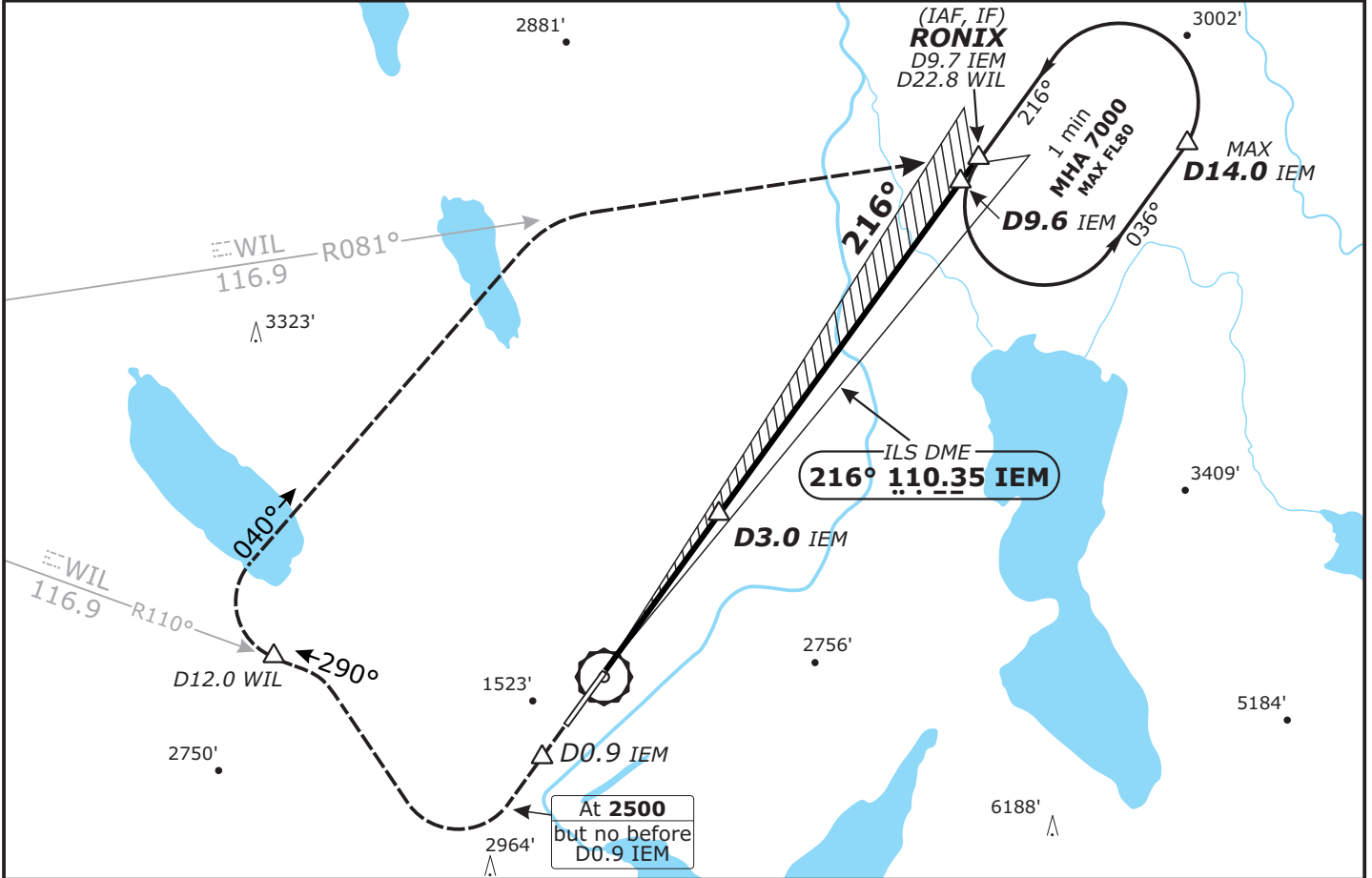
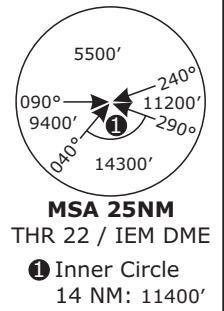
**LSME/EML**  
**EMMEN AB**

APP CHART NO.1  
Revision 09 FEB 12

**EMMEN, SWITZERLAND**  
**ILS DME Rwy 22**

**Valid for flight simulation use only - do not use for real life navigation**

Swiss Radar LSAS_CTR 128.05		EMMEN Arrival LSME_APP 119.50		EMMEN Tower LSME_TWR 120.42	
LOC IEM <b>110.35</b>	Final Apch Crs <b>216°</b>	GS <b>D3.0 IME</b> <b>2730'</b> (1330')	ILS DA(H) Refer to Minimums	Apt Elev 1400' FS: RWY <b>1400'</b> RWY 1390'	
<p><b>MISSED APCH:</b> Climb straight ahead. At 2500' but not before D0.9 IEM past the station turn RIGHT (MAX IAS 210 KT, MNM bank angle 25°) to intercept R-110 inbound WIL VOR. <b>Climb to 6000'</b>. Cross D12 WIL at 4500' or above. At D12.0 WIL turn RIGHT, intercept R-083 WIL to RONIX.</p>					
Alt Set: hPa		Rwy Elev: 50 hPa		Trans level: By ATC	
				Trans alt: 7000'	



Gnd speed-Kts	70	90	100	120	140	160
Descent Gradient 4.00° or LOC Descent Gradient 7.0%	502	645	716	860	1003	1146

<b>Flight Simulator-OPS</b>		STRAIGHT-IN LANDING RWY 22	
		<b>ILS Missed apch climb gradient</b> mim 5.0 % up to 2900'	
		DA(H): CAT A: <b>1706'</b> (306') CAT B: <b>1722'</b> (322') CAT C: <b>1737'</b> (337') CAT D: <b>1752'</b> (352')	
		CIRCLE-TO-LAND Authorized only Northwest of apt within MAX D5.0 IEM	
		MDA(H)	VIS
A		CAT A	<b>2430'</b> (1020') 1500m
B	RVR 900m	CAT B	<b>3440'</b> (2030') 1500m
C		CAT C	<b>4400'</b> (2990') 1500m
D	RVR 1500m	CAT D	<b>4500'</b> (3090') 1500m

CHANGES: New Chart